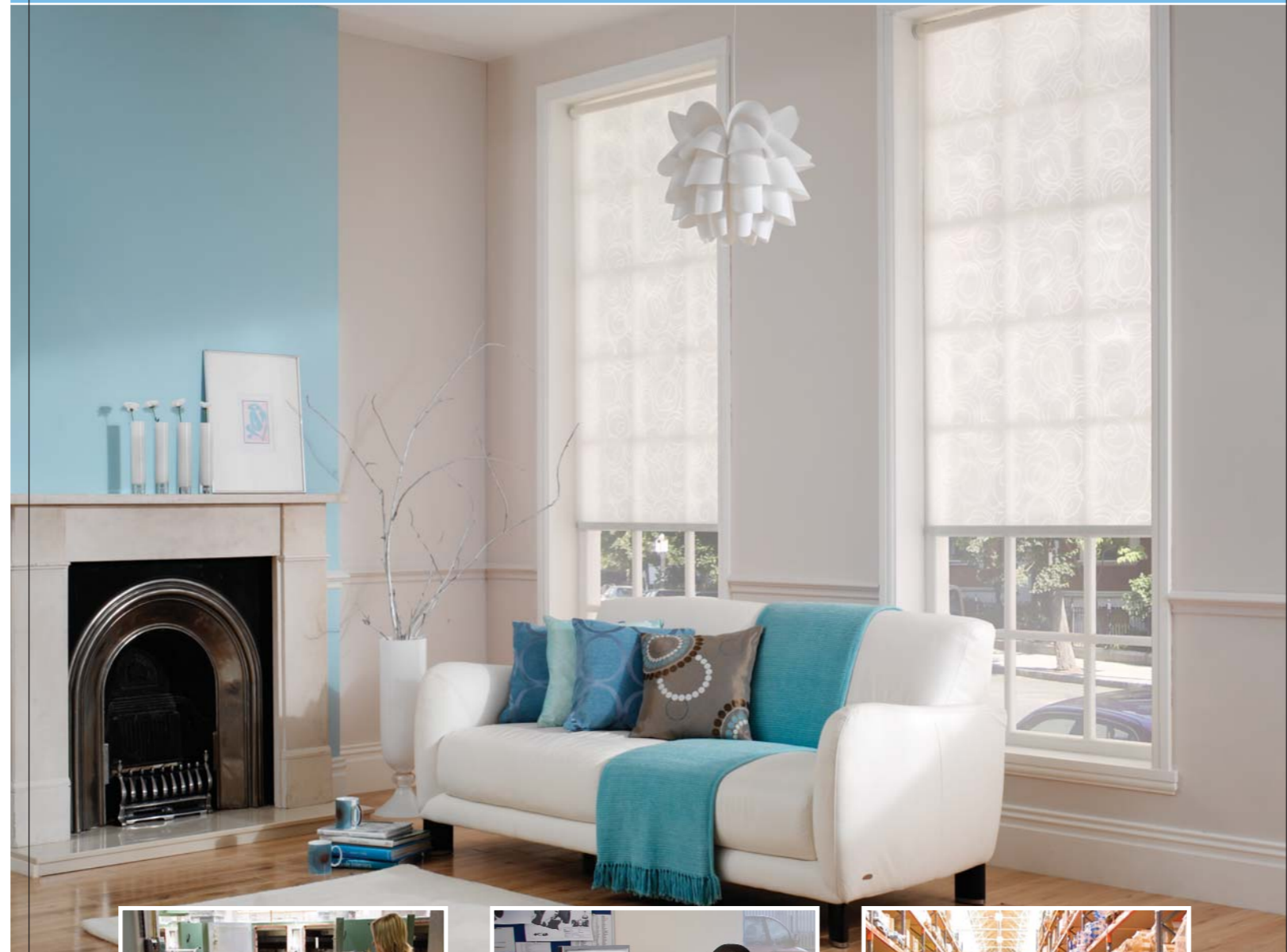
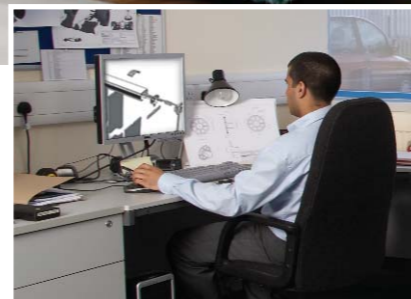


Company Profile



QUALITY



INNOVATION



SERVICE

Company History

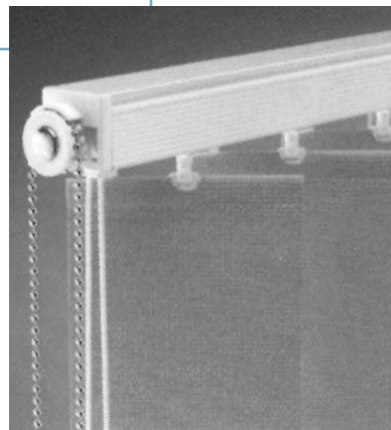
A brief look back at where Louvolite started out and how it came to be the international manufacturer it is today.

"LouvoLite is a company wholly engaged in the design, manufacture and distribution of window blind systems and fabrics".

R.C Allsopp, chairman and founder.



1969



Founded in 1969 by Chairman Reg Allsopp, Louvolite's original business was the manufacture of vertical louvre blinds that it sold into the domestic marketplace through third party retailers. The company's transition to component and fabric manufacture and subsequent growth stemmed from the success seen in those early years. The company now supplies over 100 countries worldwide.

1970s



With a desire to meet the growing demand for its products, Louvolite developed a wide range of in-house resources which started with the weaving and then the coating of fabrics. Sales grew quickly and so the company began to design and manufacture component parts and made its first move into injection moulding.

1980s



From the early 1980s the company moved from being simply a supplier of blinds to becoming a fully fledged manufacturer and distributor of window blind systems and fabrics. This included the development of manufacturing and assembly processes backed up with marketing material to assist customers in promoting their products. This aptitude for innovation backed by investment has led to significant growth in the market and the company.

Today



Louvolite is now recognised as one of the few truly global window blind fabric and component suppliers. It provides high levels of service, quality and integrity in addition to unique and varied programmes for window blind manufacturers. Its quest for innovation has not wavered, which allows its worldwide customer base to benefit by being offered unique selling propositions for their own individual markets. Louvolite's vertically integrated manufacturing operations and head office facility covers almost a quarter of a million sq ft.



Global Suppliers

Louvolite supplies fabrics, components and manufacturing equipment to over 100 countries worldwide.



In 1973 Louvolite started exploring the export market, supplying customers in Australia, New Zealand, South Africa and the Middle East.

Following these initial successes, the company began to raise its international profile through a programme of activities such as exhibiting at trade fairs and leading international exhibitions, which have been attended regularly since 1975. This created inroads to new markets, including Europe and Asia.

In 1986 Louvolite's commitment to worldwide trade took a major step towards consolidation when it opened a depot in Singapore to service Australia and South East Asia. The improvement in European supply lines also assisted Louvolite in extending its boundaries of supply well beyond its immediate EEC neighbours. In the early 1990s, Louvolite opened a wholesale distribution depot in Ontario, Canada to service its growing customer base within the North American continent.

Most recently in 2002, Louvolite relocated its South East Asia depot to New South Wales Australia. It is through these operations and the support of the export division in the United Kingdom that Louvolite supplies its goods to its global customer base.



Worldwide distribution is channelled through depots in the UK, Canada and Australia.

Style, Function & Performance

Louvolite's wide range of fabrics has been developed to match the changing demands of the home and business environment.



Louvolite products are used to manufacture window shades which enhance the decor in any home or office. In addition to their fabulous visual impact, many Louvolite products provide significant additional benefits that are not always immediately apparent. Many Louvolite fabrics provide exceptional performance that is proven to reduce solar gain and thermal loss.

The unique Louvolite Perfect Fit programmes allow window shades to be fitted to modern windows without the need for drilling or screwing into the window or surrounding plasterwork.

Louvolite recognises that products not only have to look fabulous, they also have to perform to exacting standards. Every facet of any proposed new fabric or component product is thoroughly examined and rigorously tested to ensure that it adds value to the overall programme and satisfies market requirements.

From its early days of vertical blind manufacture, Louvolite products now span the whole arena of window furnishing products and the company provides full training to its customers to ensure that

repeatability of manufacturing excellence is achieved consistently. Many of Louvolite's products now feature the appropriate intellectual property protection to ensure peace of mind for both the company and its customers. Louvolite's customers are secure in the knowledge that Louvolite guarantees quality by design.



Style and function combined beautifully with Louvolite Perfect Fit

In Tune with Excellence

Vertical integration ensures that Louvolite retains complete control from initial developments to product launch.



Louvolite adds flexibility to quality and innovation to create a winning formula which their customers know they can rely on. Louvolite are in tune with market demands. This means they are always active in developing new products yet flexible enough to be reactive in their response to immediate requirements.

Louvolite achieves this formula by careful control throughout every stage of product development and manufacture, which is where their

comprehensive, in-house resources become invaluable.

Louvolite's design teams are constantly developing new concepts. This keeps them at the leading edge of window blind design. They assess the market by working closely with their customers as well as keeping a diligent eye on contemporary fashion developments worldwide.

After approval, Louvolite's designs can be turned into reality without any great delay.

The company's printing and manufacturing capabilities enables it to send new concepts into the market place rapidly. This enables it to stay one step ahead of trends by introducing new designs into the heart of the demand.

Louvolite's engineering division uses state of the art CAD equipment and in-house rapid prototyping facilities to fine tune the designs for component performance and part manufacture.

Only high quality prime grade thermoplastic engineering materials are used in the manufacture of Louvolite component parts. Similarly, the yarns and textiles selected for use in the manufacture of fabric for Louvolite conform to the highest standards.

All raw materials are subjected to rigorous tests and examinations prior to being selected for use in the manufacture of Louvolite products. Injection moulding tools used in the production of Louvolite component parts are designed in-house.

Louvolite's engineers and qualified external resources combine to ensure high standards are maintained. Louvolite has developed blind assembly procedures and appropriate equipment to enable its customers to assemble blinds efficiently and effectively.



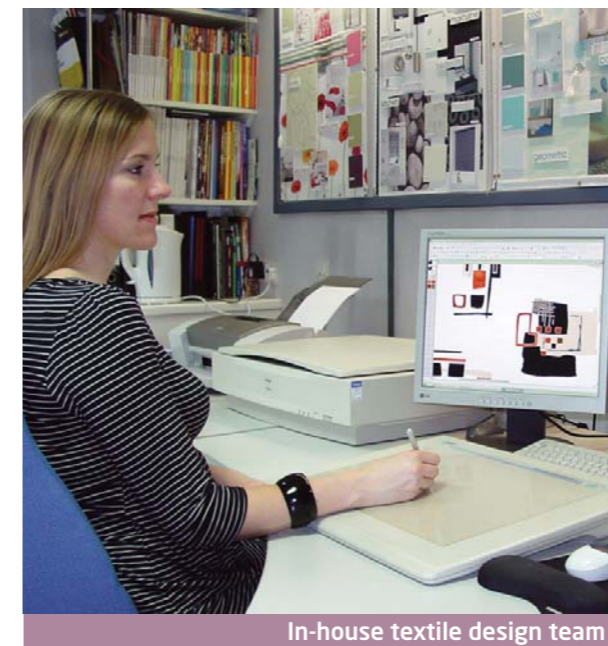
British company
manufacturing
products in the UK.



82,000 sq.ft of UK storage facilities



Louvolite manufactures its own components



In-house textile design team



Fabric testing

Investing in your future

Ongoing product development to keep a step ahead of the competition.



Save money with energy saving fabrics

It has been established that energy used in buildings accounts for almost 40 % of all energy consumed. It is recognised that the world cannot continue to be careless with energy use and must learn to be more efficient with our use of resources.

Louvolite pioneered the introduction of meaningful and accurate solar and optical performance data to enable its customers to advise on the most suitable solution to window shading challenges. Louvolite

solar and optical performance testing is carried out to European standards and this information helps building service engineers establish which fabric type to use as part of building management systems.

Louvolite has further extended the testing of its fabrics to include data on thermal efficiency. This information provides Louvolite customers with the facility to identify fabrics which, in conjunction with glazing systems, can provide the

optimum performance to reduce thermal loss through windows and doors.

The calculation methods used for Total Solar Energy Transmittance (gtot) of complex glazing systems employing shading devices was determined utilising criteria and methods detailed in European Standards EN13363-1, EN 13363-2 and EN 14501. Figures show that energy savings of up to 15% can be achieved each year which can result in a significant fuel cost reduction of up to £133 a year.

View fabric pattern books online

Louvolite's Virtual Pattern Books are at the very forefront of technology. Recognising that the Internet is the largest and fastest growing shop window in the world, Louvolite has transferred its full fabric range online and in a format identical to its original presentation books.

The opportunities that the Louvolite's Virtual Books present to its customers are tremendous. Remote consumers can be directed to blind makers' website to view product collections

online. Consumers can pre-select product and fabric preferences to discuss with their blind supplier at the time of the survey visit.

Marketing initiatives such as the Virtual Book and website development programme are just a part of Louvolite's high quality customer support and consumer education programme.

Louvolite's ability to create products and programmes that help advance the industry is recognised as a key fact in its

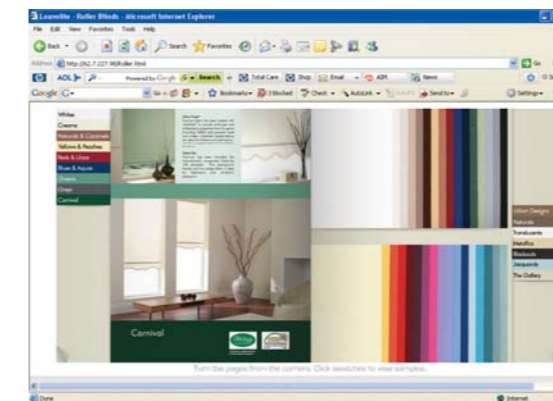
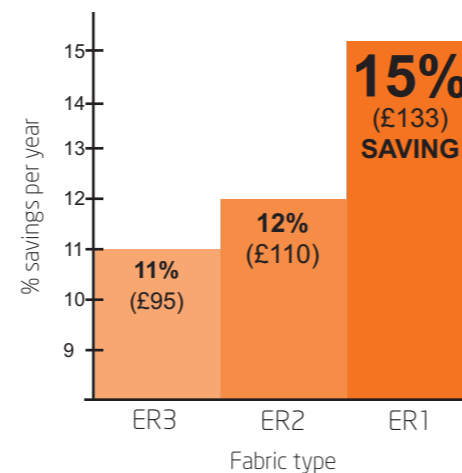
success. The company will ensure that this process is ongoing and that it will continue to endeavour to exceed the expectations of its customers.



The window on the left has ER1 energy saving window blinds installed.

* Figures based on a 3 bed single glazed detached home.

Potential home energy savings using Louvolite fabrics



Pattern books can be viewed online giving our customers easy access to all Louvolite pattern books.





United Kingdom

T: +44 (0)161 882 5000
F: +44 (0)161 882 5009
E: orders@louvolite.com

United Kingdom (Export)

T: +44 (0)161 882 5000
F: +44 (0)161 882 5019
E: export@louvolite.com

Canada & USA

T: +1 905 374 0123
F: +1 905 374 0334
E: sales@louvolitecanada.com

Australia & S.E Asia

T: +61 (0)2 9729 3000
F: +61 (0)2 9729 2333
E: sales@louvoliteaustralia.com

www.louvolite.com

